

# Swedish Medical Center Auxiliary

## VOLUNTEER VOICES



### Swedish Medical Center

Mary White .....CEO & President  
Carol Mumford.....VP Administration  
Stacey Boyd..... Director Volunteer Services

### Swedish Auxiliary Managers

Margaret Ansted..... Gift Gallery  
Stacie Saavedra.....The Second Chance Shoppe

### 2012 Auxiliary Board of Directors

Sara O'Mary.....Acting President  
Marilyn Arnold..... Chief Financial Officer  
Kim Prescott ..... Secretary  
Jackie Thorland..... VP Finance  
Kathy Wheeler/  
Sara O'Mary..... VP Fundraising  
Karen Humes..... VP Meeting & Travel  
George Steinberg  
Kim Prescott..... VP Membership

### Committee Chairs

Ginny Mayers/  
Carlyle Montelius..... Education  
Jody Feely.....Historian  
Ken Montelius .....Legislative  
Kathy Christie.....Nominating  
Norma Leach .....Sewing  
Lynn Bunnell.....Publicity

### Members at Large

Dee Hale.....Assistance with Grief  
Judith Stucky .....Telephone Tree  
Margaret Ansted.....Shots for Tots  
Marjie Guard .....SAC

### Phone Numbers

Volunteer Office .....303.788.6560  
.....303.788.7400  
Fax .....303.788.4044

For more information please visit us at  
[www.swedishauxiliary.org](http://www.swedishauxiliary.org)



NOVEMBER, 2012

## NOTES FROM SARA

The holidays will be here before you know it and maybe, just maybe. . . . some snow. You all know snow is not on my "favorite things" list but we so badly need moisture I'll tough it out!!!!

A few tidbits of news –

- **Most exciting** – the Auxiliary has purchased a digital baby grand piano to be placed in the lobby of the hospital for the enjoyment of our patients, families, visitors and employees. It will be playing soft, soothing music throughout the day.
- Annual Holiday Luncheon and Installation of 2013 officers will be held on Friday, November 30. The luncheon will be held at Pinehurst Country Club. If you are a paid member of the Swedish Medical Center Auxiliary please be sure to get signed up!!
- Annual Christmas Bake Sale is scheduled for Friday, December 21. Start pulling out your favorite holiday recipes so we can have our usual fantastic selection of goodies. Thursday December 20<sup>th</sup> will be the day to bring in your sale items.

Looking forward to seeing you at the Holiday luncheon!!!!

Sara O'Mary  
Acting President

**HAPPY THANKSGIVING**



**SWEDISH MEDICAL CENTER AUXILIARY BOARD  
SLATE OF OFFICERS - 2013**

**Executive Committee**

President	Sara O'Mary
President Elect	Kathy Wheeler
Secretary	Kim Prescott
Treasurer	Marlene O'Neal
CFO	Marilyn Arnold
V.P. Finance	Jackie Thorland
V.P. Fundraising	Kathy Wheeler

**Committee Chairs**

Education Co-Chairs	Ginny Mayers/Sally Jo Thomas Carlyle Montelius
SAC Scholarship Committee	Marjie Guard – Chair Lynn Bunnell/Kathy Christie/Sara O'Mary
Historian	Jody Feely
Nominating	Kathy Christie
Publicity	Lynn Bunnell

**Members at Large**

Membership/Recruitment	George Steinberg/Kim Prescott Ken Montelius
Assistance with Grief	Dee Hale
Past President/Parliamentarian	Kathie Christie
Telephone Tree	Judith Stucky
Sewing Committee	Lorraine Givens/Norma Leach

**Ex Officio**

Gift Gallery	Margaret Ansted
The Second Chance Shoppe	Stacie Saavedra
Director of Volunteer Services	Stacey Boyd

**Special Projects**

Freda Benintendi	Carlyle Montelius
Lynn Bunnell	Carol Murray
Maybelle Davey	Billye Regan
Karen Humes	Sally Jo Thomas
Ginny Mayers	Jackie Thorland

**SMCA 2012 UPCOMING FUNDRAISING VENDOR SALES  
ASPEN ROOM, SWEDISH HOSPITAL**

**Pearl Connection: November 1 - 2  
(Scarves, Tote Bags, Pearl)**

**Appreciation Events: November 2  
(Body Comfort products)**

**Colorado Watch Company: November 8 - 9  
(Watch sales/battery replacement)**

**MarJay Crafts: November 8 - 9  
(Handmade items)**

**Eclectic Collection: Nov. 15 - 16  
(Antique and new jewelry/accessories)**

**Treasured Creations: November 29 - 30  
(Unique gifts for the holidays)**

**180 Degree Design: December 6 - 7  
(Custom-designed jewelry)**

**New Era: December 13 - 14  
(Wide variety of imported products)**

**ELECTION DAY NOVEMBER 6**



**THAT'S ANOTHER ONE FOR THE RECORD BOOKS!**

The Second Chance Shoppe's October Super Saturday Sale was phenomenal . . . with sales of nearly \$2,426.00.

A special thank you to the volunteers who worked the Super Saturday Sale; Norma Brown, Lynn Bunnell, Barb Foley, Karen Vigliano, Sharon Landis, Lillian McCrumb, Sara O'Mary, and Roxanne Slotnick.

**Welcome**

We have a new volunteer joining our team on Monday's . . . a warm welcome to Roxanne Slotnick from all us at The Second Chance Shoppe.

**SUPPORT THE AUXILIARY . . . DONATE**

Please consider supporting the Auxiliary with your tax deductible donation. We take donations Monday thru Friday 10:00 a.m. to 2:00 p.m. We are always in need of donations, but some of the things that are overlooked *are greeting cards, jewelry, scarfs, hats, socks and undergarments (in new condition).*

**GIFT GALLERY  
VOLUNTEERS NEEDED**

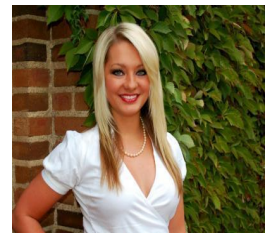
Additional volunteers are needed to help staff the Gift Gallery of Swedish Medical Center. The Gift Gallery is a one of a kind Gift Shop for patients their families, visitors and Swedish employees of the hospital. A great place to volunteer! Please contact Margaret Ansted, Manager at 303.788.6668 or the volunteer office at 303.788.6560.

**FINANCE**

Jackie Thorland – Vice President of Finance

The following recent donations were approved by the Finance Committee and the Auxiliary Board:

- Donation to the Progressive Health Center
- Purchase of a digital baby grand piano for the lobby of the hospital



**Maddison Saavedra**

The INSPIRE ticket swept the student government election at CU. Maddison Saavedra, a sophomore in the Leeds School of Business at CU, was one of 10 students elected as a CU Student Government Representative-at-Large. CU has one of the largest student governments in the nation. Congratulations!



The Auxiliary continues to update email addresses for all Auxiliary members/volunteers. Please email your current email address to Judith Stucky – Telephone Tree Committee Chairman at [www.theCNI.org](http://www.theCNI.org)

